



User's manual of
wireless intercom handheld
PNI-HT2100



Please keep the manual for reference

Content

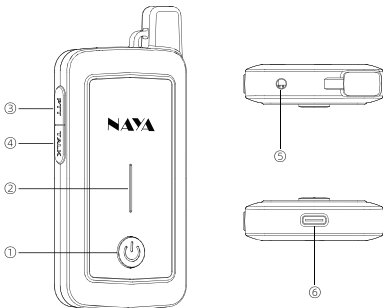
1. Check the items in the package	3
2. Parts introduction	3
3. Preparation before using	4
3.1 Charge the battery.....	4
3.2 Plug the headset.....	4
4. Basic operation	4
4.1 Basic operation.....	4
4.2 Volume adjustment.....	4
5. Call process	5
5.1 PTT mode call.....	5
5.2 TALK mode call.....	5
6. Software installation and connection	5
6.1 Software download.....	5
6.2 Driver and software download.....	5
6.2 Connection hints.....	5
7. Software usage	6
7.1 Open the software.....	6
7.2 Fixed channel setting.....	7
7.3 Communication password.....	7
7.4 Networking mode.....	7
8. Maintenance and Cleaning	7
8.1 Maintenance.....	7
8.2 Cleaning.....	7
9. Warranty and Maintenance Terms	8
9.1 Scope and duration of warranty.....	8
9.2 Warranty application.....	8
10. Warranty card	8

1. Check the items in the package

◆ The package contains the following items, if any damage or loss, please contact Naya or the dealer you purchased from.

No.	Item	Q'ty
①	Handheld	1
②	Earphone	1
③	USB charger	1
④	USB charging cable	1
⑤	Manual	1

2. Parts introduction



No.	Items	Description
①	Power/volume	For power on/off and volume adjustment
②	Battery display	Built-in battery remaining power indicator
③	PTT button	Press and keep holding to speak, release to finish.
④	TALK button	Click to speak, click again to finish.
⑤	Headset port	3.5mm
⑥	Charging port	Type-C

3.Preparation before using

3.1 Preparation before using

◆ Insert the plug of power adapter into power outlet;

Insert the other end of the power adapter into the charging port of the handheld.

The charging indicator light flashes when the device is charging, and when fully charged, all lights up and stops flashing.

3.2 Plug the headset

◆ Align the plug of the special earphone with the earphone port and press to insert; if you need to remove the earphone, just pull it out directly.

4.Basic operation

4.1 Power on/off

◆ While the device is off, press and hold the switch button for 3 seconds, the power indicator and the power button will light up, and the boot is completed;

◆ While the device is on, press and hold the switch button for 3 seconds, the power indicator and the power button are off, and the shutdown is completed.

4.2 Volume adjustment

◆ After powering on, press the Switch/Volume button, a prompt tone about the current volume will be heard, and continue to press the button to adjust the volume.

◆ If there is a volume adjustment button on the headphone wire control, you can also use the headphone wire control to adjust the volume.

5.Call process

◆ PNI series supports 2 call modes: PTT call and TALK call

5.1 PTT mode call

◆ Keep pressing the [PTT] button to initiate an internal call to other devices in the current channel, and release the button to end the call.

5.2 TALK mode call

◆ Press the [TALK] button once, and you can initiate an internal call to other devices in the current channel without pressing it all the time. Press the button again to end the call.

◆ When the device does not initiate a call, if another phone initiates a call, the device will hear and play the sound.

6.Software installation and connetion

6.1 Software download

◆ Log in to www.nayatec.com website, find the corresponding product model in the technical support, and download the corresponding driver and configuration software according to the tutorial.

6.2 Driver and software download

◆ Install the downloaded driver file "PL2303_64bit_Installer.exe".

After the installation is successful, plug the data cable into the computer and check the port number in the device manager.

◆ Install the downloaded configuration software, following the installation steps (Windows 7 system is recommended)

6.3 Connection hints

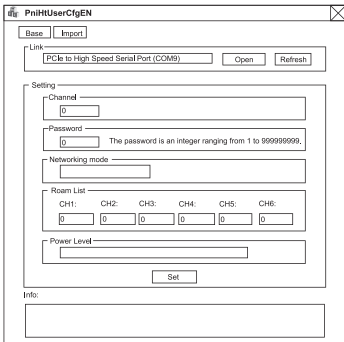
◆ After the driver and software are installed, connect the handheld to the computer as shown below. The data cable is a specially customized cable and cannot be replaced by a charging cable.



7. Software usage

7.1 Open the software

◆ After the installation is complete, run the PniHtCfg.exe file. After opening the software, the following figure is shown. The setting interface is all gray and cannot be edited before selecting and opening the port.



- ◆ After the setting software is opened, select the corresponding serial port number, and then click to open the port, the software interface becomes editable condition.
- ◆ Turn on the handheld at this time (if it is already turned on, simply turn it off, and then turn it on again). After the handheld is turned on, "connection successful" appears in the software information bar, indicating that the connection is successful.
- ◆ After the handset is successfully connected, it will automatically obtain the parameter information currently set. Modify the parameters according to the needs.
- ◆ After that, click "SET" to complete the setting operation.

7.2 Fixed channel setting

- ◆ The fixed channel parameter corresponds to the channel setting of the handheld. Only handheld or repeaters under the same channel can communicate with each other.

7.3 Communication password

- ◆ Under the same channel, the communication password is required to be the same. Under the same channel but with different communication passwords, you cannot communicate with each other. Modifying the communication password of all handhelds and repeaters for communication. This function is often used to prevent eavesdropping with same frequency

7.4 Networking mode

- ◆ Fixed channel and roaming switching mode are optional as networking mode. For specific function descriptions, please refer to the handheld network mode setting.

8.Maintenance and Cleaning

- ◆ In order to ensure the good performance of this device and prolong its service life, please be familiar with the following contents for better maintenance and cleaning.

8.1 Maintenance

- ◆ Do not puncture or scratch the device with hard objects.
- ◆ Do not store the device in an environment that contains corrosive electronic circuits.

8.2 Cleaning

- ◆ Please clean the device regularly, and use a clean and dry towel or brush to remove the dust on the surface of the equipment.

◆ If the device casing is dirty, it can be cleaned with neutral detergent and non-woven fabric. Do not use detergent, alcohol or spray which will damage the device, make sure the device is completely dry, otherwise do not use it.

9.Warranty and Maintenance Terms

◆ Naya promises that defects in material or workmanship under normal operating and maintenance conditions of all devices produced by our company, are covered by the warranty service specified below from the date of purchase.

9.1 Scope and duration of warranty

- ◆ Handheld:12 months
- ◆ Earphone: 6 months

9.2 Warranty application

◆ If you apply for product maintenance, please be sure to provide the warranty card or valid purchase invoice as a certificate. During the period, the relevant signs of the products shall be kept clean and complete and shall not be torn up.

10. Warranty card

◆ In order to protect your rights and interests, please fill in it carefully and keep it properly as a certificate for maintenance.

Reseller information			
Model		Sales date	
Reseller		Contact telephone or E-mail	
User information			
User		Contact telephone	
Address		E-mail	



Please read the manual carefully before using the product

Website: <http://www.nayatec.com>

Manufacturer: Shanghai Naya intelligence Technology. Co.,Ltd

Address: No.7001 Zhongchun RD., Minhang district, Shanghai, 201101, China

version: 20220712